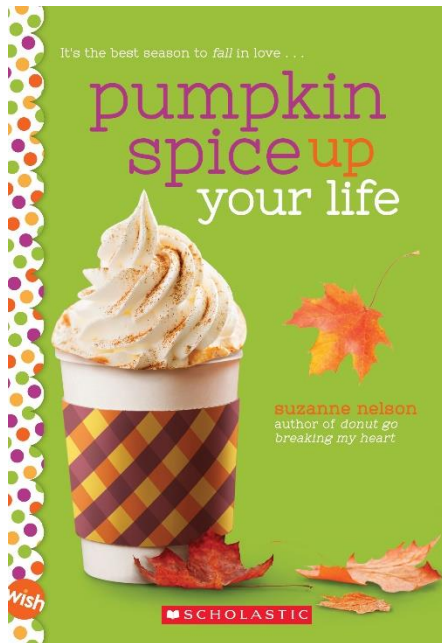


---

# PUMPKIN SPICE UP YOUR LIFE

## DISCUSSION QUESTIONS

---



### *Discussion Questions for PUMPKIN SPICE UP YOUR LIFE*

*by Suzanne Nelson*

Nadine and Daniel have been best friends pretty much since birth. While she has her music rehearsals and he has his snowboarding, the two of them always make time to meet up at the Snug Mug for catch-ups over pumpkin spice lattes.

But their daily routine is shaken up when a new girl, Kiya, starts at their school. Daniel falls head over heels for Kiya the second he sees her. But then—oh no!—Nadine realizes she might be falling for Daniel herself. Nadine knows she has to find the courage to tell Daniel how she feels, but what if she's lost her chance?

1. Describe the friendship between Nadine and Daniel. How is it similar or different to relationships you have with your close friends?
2. Compare and contrast Nadine's and Kiya's personalities. How do their personalities affect the way they behave around Daniel? Do you think Kiya and Nadine will become better friends in the future? Why or why not?
3. What do you think about the way Nadine handled her changing feelings about Daniel? What about the way she treated Kiya? If you were Nadine, what might you have done differently?
4. How does Daniel offer support to Nadine in her music as well as in her family life? How might you offer support to a friend struggling with a tough problem?
5. Nadine has a passion for playing the cello. Do you have a hobby, sport, or talent that you're passionate about? What is the most challenging aspect of your passion? What do you love the most about it?
6. Describe the atmosphere at the Snug Mug and how it changes when Kiya's father takes over ownership. Do you agree or disagree with the changes he wants to make? Why?
7. How does Nadine's relationship with her mother change from the beginning to the end of the story? What do you think about the way Nadine chooses to handle it? And how her father handles it? How would you have felt if you'd been Nadine in this situation?
8. Which character in the book are you the most similar to? Why? Which character are you the most different from? Why?
9. What is your favorite season and why? Describe a favorite event or place you like to visit during that time of year. Why it is special to you?
10. Invent your own Snug Mug waffle and cozy coffee recipe, listing all of your ingredients. Try making it with family or friends!